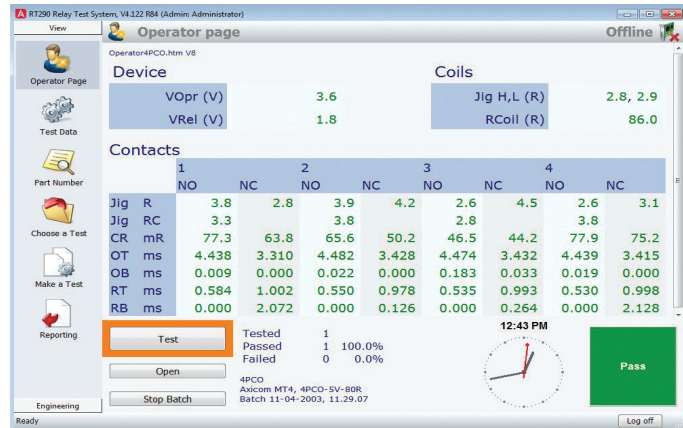


RT290 – RELAY TEST SYSTEM

High Speed Test



Turn-key relay parametric test system for use with testing reed and electromechanical relays. The implementation of solid state switching and data capture techniques makes it especially well-suited for high throughput automated production lines and laboratory environments.

Key Features

- Handles relay devices up 8 pole form C
- Very high-speed
- Turn-key software – load up pre-written device tests to CECC, IEC and custom
- Automatic self-test and calibration built-in with laboratory traceability
- Full range of accessories and build options
- Test program compatibility with ART parametric test systems
- AC coil option
- 10 Amp contact option
- 19" rack mounting

Overview

The RT290 extends the advantages of the existing ART parametric test systems to cover both DC and AC coil relays and adds tests such as 'magnetic circuit' and 'coil inductance'. A built-in 'industrial' PC controller works closely with an advanced dedicated parallel architecture and uses special digital algorithms to achieve new levels of measurement performance and throughput.

Menu-based Software

Test sequences are simple, clear and built from pre-written test types to CECC, IEC or custom formats using menu selection. A 'Relay Wizard' macro allows a complete device test to be built from a few simple questions and answers. Test sequences can be run, re-tested, cycled or step-executed to enable fast development of a test program.

Standard Internal contact loads	0-255mV / 10mA, 6V / 10mA, 6V / 100mA
Contact load options	12V/1A, 28V / 100mA 0 - 30V / 0 - 10A
Max no. contacts	8 PCO
Coil types	monostable, dual coil latching
Coil drive	DC: 0 - 80V / 0.4A (0 - 380V / 0.1A option)

Scan for Website:



Product Features

Wide range of device types

Handles DC monostable or bi-stable (single and dual coil) mechanical devices up to 4-pole changeover contacts without additional test equipment. Various contact materials can be accommodated by internal low and medium power loads. High power loads can also be provided with the ASY0700 option.

Fully Kelvin (4 terminal)

All coil and contact connections are 4-terminal (Kelvin) with loop resistance (continuity) measured to confirm correct device insertion before test.

In-circuit coil network capability

The system can connect custom diodes or other networks across device coils during testing. This can be used to confirm correct contact timing prior to the diode assembly stage.

Self-test and calibration

Comprehensive built-in self test and fault diagnostics capability. A front panel mounted high-precision standards card can be quickly removed for traceability.

Software compatibility

Test programs transportable between ART parametric relay / contactor test systems.

Flexible reporting

Data can be viewed, printed or exported to print or data-log files, this data can then be inserted into a wide range of spread sheet and database packages. The integrated report generator package can be used to automatically generate customisable Microsoft Word™ based reports.

Spread sheet style programming

Test conditions can be expressions as well as fixed values, for example to measure contact resistance at 110% of the operate voltage.

On-line documentation

All hardware and software documentation is supplied in an 'on-line' form. One key-press calls up test and operational information in a context-sensitive display.

Designed for the 'factory floor'

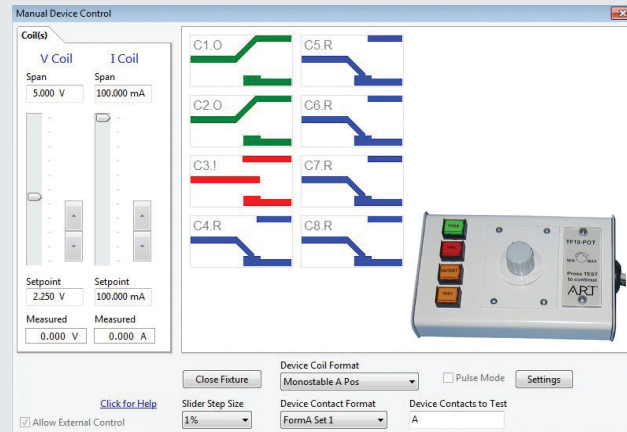
The 19" rack mountable system is designed for harsh environments and uses a built-in industrial grade PC controller.

External control

Available with the rear mounted Handler Port or software using a standard RS-232 connection. External test equipment can also be controlled from within the test environment if required.

Built-in manual control

Simple to use coil control sliders and contact monitoring to assist manual contact adjustments.



Example: manual control screen (TF10-POT inset)

Hardware options list:

Manual coil control

An external pot control module TF10-POT (shown inset above) integrates with the manual device control page to assist contact adjustment.

High contact current

High contact current: 30 Volt, 10 Amp contact load unit ASY0700.

Coil resistance temperature correction

Measured coil resistance values can be related back to a defined standard with an optional platinum temperature probe.

High voltage DWV / IR testing

When used in conjunction with ART's own RT900 HV test system, the RT290 offers complete parametric and high voltage test capability.

High power AC/DC coil drive

The ASY0710 AC/DC coil module adds high current DC and AC coil drive capability for all relay coil types.



See also:
Reflex 10 low cost relay
test system