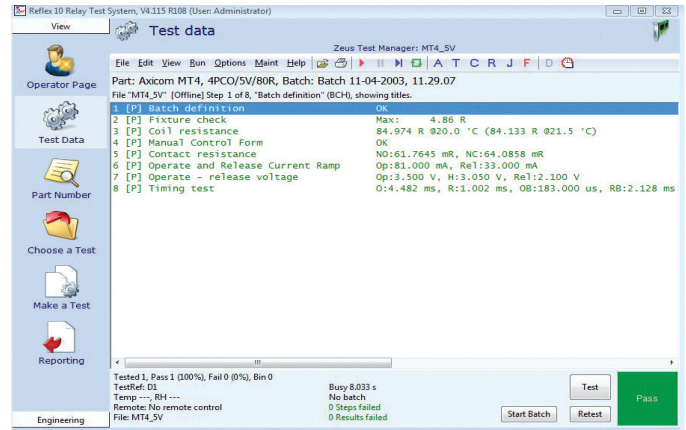
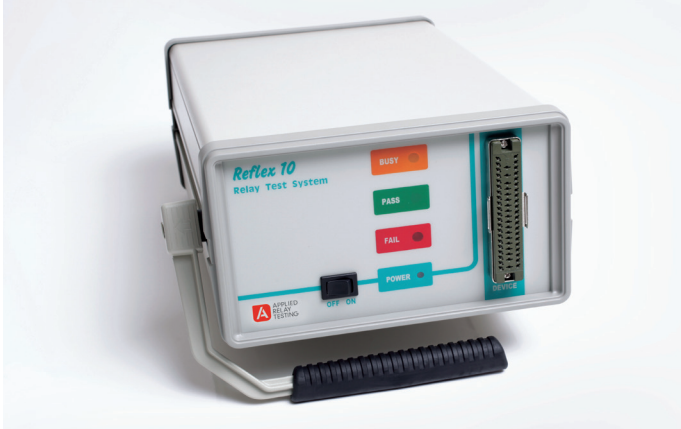


# REFLEX 10 – RELAY TEST SYSTEM

Low Voltage Test



Designed to address the requirements for affordable precision relay testing. The Reflex 10 parametric relay test system provides a turnkey solution for low to medium volume testing along with a wealth of accessories to cater for a wide range of device types.

## Key Features

- Low cost
- Handles a wide range of relay devices up to 4 pole form C
- Highly portable using PC interface
- Turn-key software – load up pre-written device tests to CECC, IEC, MIL spec and custom
- Full range of accessories and build options to cater for a wide range of device types
- Test program compatibility with full range of ART parametric test systems
- Built in functional test.

## Overview

The Reflex 10 complements the ART range of test equipment to provide low cost, high quality test capability ideally suited to manual production lines and engineering “quick look” analysis. ART’s common user interface provides compatibility across the RT290 and Reflex parametric product ranges. The PC parallel port connection provides portability and allows the system to be shared between test stations.

## Menu-based Software

Test sequences are simple, clear and built from pre-written test types to CECC, IEC or custom formats using menu selection. A ‘Relay Wizard’ macro allows a complete device test to be built from a few simple questions and answers. Test sequences can be run, re-tested, cycled or step-executed to enable fast development of a test program.

Internal contact loads	30mV/10mA, 28V/100mA or 6V/10mA
External contact loads	0 - 30V / 0 - 10A (requires ASY0700 option)
Max no. contacts	4 PCO
Coil types	Monostable / single or dual coil latching
DC coil drive	0 - 80V / 400mA (0-370V and 0-1A options)
Device connector	60 way Hirose

Scan for Website:



## Product Features

### Built-in functional check

Internal hardware adds capability for system performance verification.

### Portability

The system is designed for ease of transportation between test cells to allow the user to make optimum use of the system when and where it is needed.

### Wide range of device types

Handles DC monostable or bi-stable (single and dual coil) mechanical devices up to 4-pole changeover contacts without additional test equipment.

### Wide range of contact materials

Various contact materials can be accommodated by internal low and medium power loads. High power loads can also be provided with the ASY0700 option.

### Kelvin device connections

All contact connections are 4-terminal (Kelvin) with loop resistance (continuity) measured to confirm correct device insertion before test.

### Software compatibility

Test programs transportable between all ART parametric test systems.

### Flexible reporting

Data can be viewed, printed or exported to print or data-log files, this data can then be inserted into a wide range of spread sheet and database packages. The integrated report generator package can be used to automatically generate customised Microsoft Word based reports.

### 'Spread sheet'-style programming

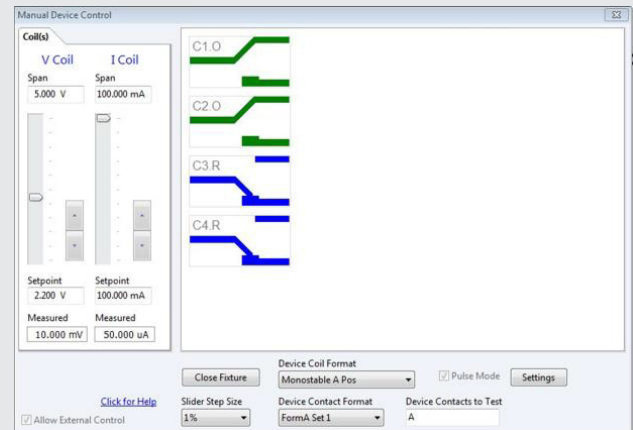
Test conditions can be expressions as well as fixed values, for example to measure contact resistance at 110% of the operate voltage.

### On-line documentation

All hardware and software documentation is supplied in an 'on-line' form. One key-press calls up test and operational information in a context-sensitive display. Documentation includes 'How to construct test programs', 'Frequently asked questions', and hardware interfacing information. A simple printed user guide provides all the information required to set-up the system and start testing.

### Built-in manual control tool

Simple to use coil control sliders and contact monitoring to assist manual contact adjustments.



Example: Built-in manual control tool

## Hardware options list

### High Contact Current

Programmable 0 - 30 Volt, 0 - 10 Amp contact load unit ASY0700

### Manual coil control

An external pot control module TF10-POT integrates with the manual device control page to assist contact adjustment.

### Coil temperature correction

Platinum probe to measure ambient temperature to correct coil resistance values back to a defined standard.

### External control

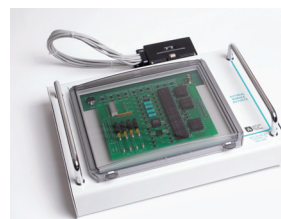
Handler interface connection for use in a semi-automated environment.

### Carry Handle

As shown.

### Calibration

A semi-automated calibration / self- test module, ASY0270, is available.



A semi-automated calibration/self-test module ASY0270